



# Ovol1 Polyclonal Antibody

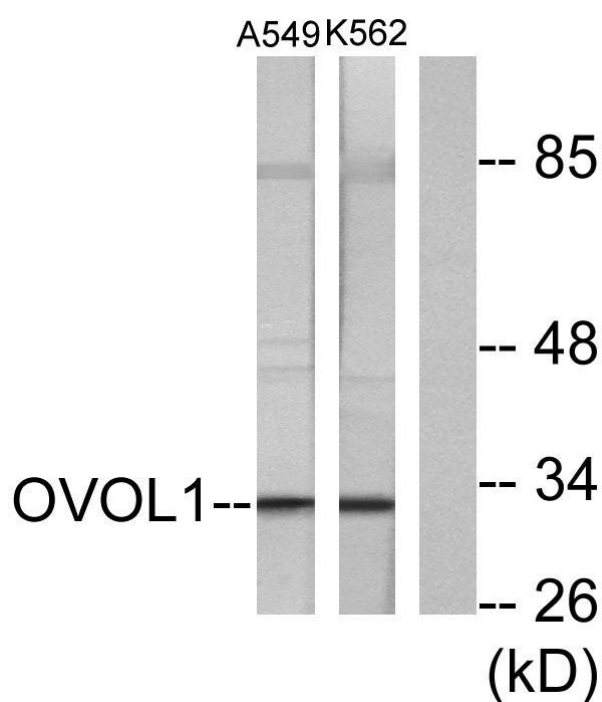
<b>Catalog No</b>	YP-Ab-01931
<b>Isotype</b>	IgG
<b>Reactivity</b>	Human;Mouse
<b>Applications</b>	WB;IHC;IF;ELISA
<b>Gene Name</b>	OVOL1
<b>Protein Name</b>	Putative transcription factor Ovo-like 1
<b>Immunogen</b>	The antiserum was produced against synthesized peptide derived from human OVOL1. AA range:1-50
<b>Specificity</b>	Ovol1 Polyclonal Antibody detects endogenous levels of Ovol1 protein.
<b>Formulation</b>	Liquid in PBS containing 50% glycerol, 0.5% BSA and 0.02% sodium azide.
<b>Source</b>	Polyclonal, Rabbit,IgG
<b>Purification</b>	The antibody was affinity-purified from rabbit antiserum by affinity-chromatography using epitope-specific immunogen.
<b>Dilution</b>	WB: 1/500 - 1/2000. IHC: 1/100 - 1/300. ELISA: 1/40000.. IF 1:50-200
<b>Concentration</b>	1 mg/ml
<b>Purity</b>	≥90%
<b>Storage Stability</b>	-20°C/1 year
<b>Synonyms</b>	OVOL1; Putative transcription factor Ovo-like 1; hOvo1
<b>Observed Band</b>	33kD
<b>Cell Pathway</b>	Nucleus .
<b>Tissue Specificity</b>	Expressed in fetal kidney, and also in adult pancreas and placenta. Not expressed in intestine, peripheral blood lymphocytes and ovary.
<b>Function</b>	function:Putative transcription factor. Involved in hair formation and spermatogenesis. May function in the differentiation and/or maintenance of the urogenital system.,similarity:Contains 4 C2H2-type zinc fingers.,tissue specificity:Expressed in fetal kidney, and also in adult pancreas and placenta. Not expressed in intestine, peripheral blood lymphocytes and ovary.,
<b>Background</b>	This gene encodes a putative zinc finger containing transcription factor that is highly similar to homologous protein in Drosophila and mouse. Based on known functions in these species, this protein is likely involved in hair formation and spermatogenesis in human as well. [provided by RefSeq, Aug 2011],
<b>matters needing attention</b>	Avoid repeated freezing and thawing!



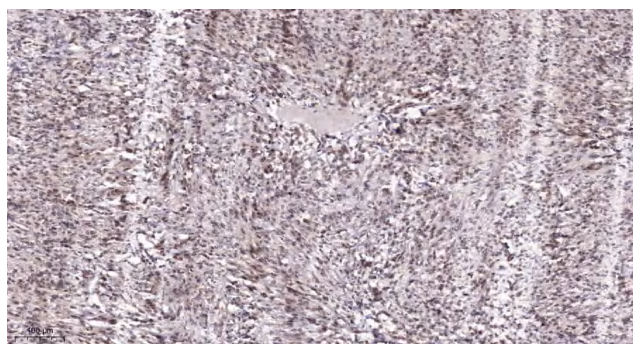
### Usage suggestions

This product can be used in immunological reaction related experiments. For more information, please consult technical personnel.

## Products Images



Western blot analysis of lysates from K562 and A549 cells, using OVOL1 Antibody. The lane on the right is blocked with the synthesized peptide.



Immunohistochemical analysis of paraffin-embedded human Colon cancer. 1, Antibody was diluted at 1:200(4° overnight). 2, Tris-EDTA,pH9.0 was used for antigen retrieval. 3,Secondary antibody was diluted at 1:200(room temperature, 45min).